

BRAUN

INTERTEC

The Science You Build On.





CONTENTS

Introduction	4
Our Services	6
Market Sectors	12
About Us	18
Contact	20

WE'RE THE SCIENCE BEHIND YOUR SUCCESS.

We're here to provide you the science you need, right at the intersection where your problems meet our solutions.

WHAT KIND OF SCIENCE DO YOU NEED?

Our science happens because of our people. Our employee-owners approach every project with an entrepreneurial spirit and a rich expertise in their field. At Braun Intertec, we have over 50 different technical disciplines represented in our ranks, and experience across a wide range of industries. We match that expertise and commitment to quality with a collaborative mindset to deliver the science you need to be successful, and translate it into plain English.

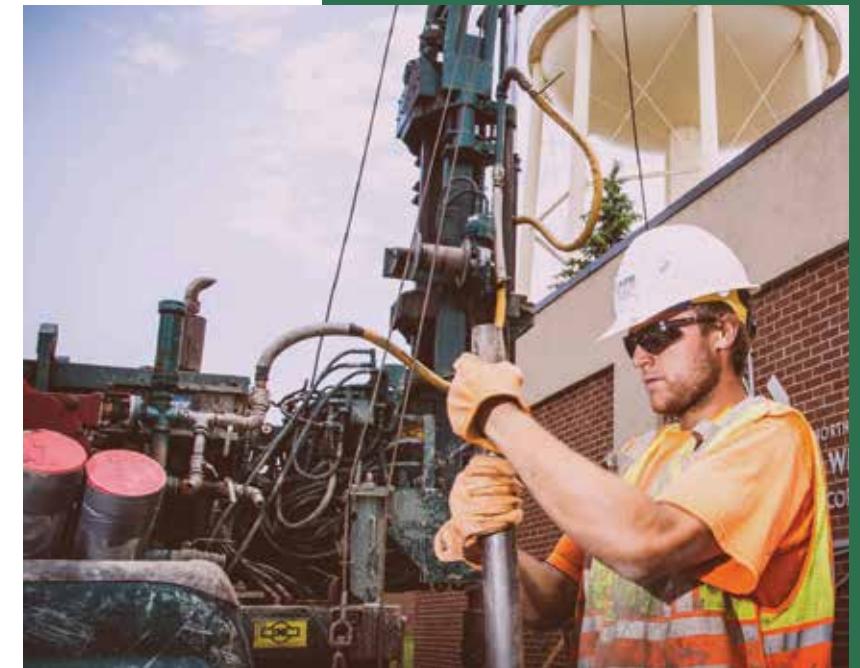
We're collaborators with the passion to build innovations that solve your problems. We show it by providing you quality solutions and recommendations to your engineering, environmental, design and testing challenges. For nearly 60 years we've built a trusted reputation by delivering results that have made us the consultant of choice across industry and state lines.

Custom is our standard, safety is our priority. Our labs are full of devices and tests we've custom built because a client had a problem that no one had encountered before. With Braun Intertec you receive that innovative thinking on scope, on schedule, and on budget so you can have the science you need and know that the job is being done right.

"Braun Intertec provided creative, timely, and cost-effective solutions."

*Lois Eberhart, Water Resources Regulatory Administrator
City of Minneapolis*

OUR SERVICES



GEOTECHNICAL ENGINEERING

A strong foundation starts with a thorough understanding of soils and site characteristics. The geotechnical engineering team at Braun Intertec offers a wide range of resources including extensive professional experience to discover the mechanics of soil and rock for any project. Our highly trained team of engineers and field technicians provide site exploration and testing services, anticipate potential project problems and provide strategic recommendations. Plus, we have a full service, in-house geotechnical and materials testing laboratory to give your team greater control over testing schedules and project reports. Additionally, we are adding new technical service areas and expanding our existing service areas.



We specialize in the following service areas:

- Deep Foundations
- Geotechnical Engineering
- In-Situ Testing
- Instrumentation
- Pavement
- Slope Stability

STRUCTURES EVALUATION

Our staff of professional engineers, scientists and technicians has the knowledge and depth of experience to support your needs as it relates to concrete consulting, nondestructive testing and structural consulting. With expertise ranging from understanding concrete material interactions to assessing and evaluating structures to performing nondestructive testing for more targeted results, we can help you meet the scope and specifications required for your project. Our customized solutions allow us to help you make informed decisions about the future of your structure.



DRILLING

Drilling has been at the core of our services for nearly six decades. Using a large, diversified fleet of drill rigs, we can provide a wide range of soil, rock, environmental and contract drilling services on nearly any terrain or on barges if your project is over water. Because we have an in-house fleet of rigs, you'll benefit from improvements in cost estimating, greater scheduling control and dedicated time to the job. Our drilling staff puts safety first and receives regular training to advance their knowledge of safety, soils classification and drilling techniques.



ENVIRONMENTAL CONSULTING

From site selection and planning, to design and construction, to operations and property management, Braun Intertec is a trusted adviser to dozens of public entities and private clients across the nation for environmental concerns. At Braun Intertec, we take pride in our multi-faceted and practical approach to environmental consulting. During our process of developing environmental solutions, our geologists, hydrogeologists, engineers and scientists maintain a clear understanding of your business objectives to help you navigate complicated environmental issues.

Our environmental consulting includes, but is not limited to:

- Due Diligence
- Remediation Design and Implementation
- Environmental Management
- Natural Resources Management



“Braun Intertec is the most trusted, responsive and professional environmental firm that we use. They deliver quality services on-time and under budget.”

*Don Theisen, Director
Washington County Public Works*

BUILDING SCIENCES

The Braun Intertec Building Sciences team supports contractors, owners, architects, engineers and attorneys in evaluating the performance of buildings and structures as an independent third party firm. Our ultimate goal is to attain a building that performs in the way it was designed. To do this, our team works to listen, evaluate and focus on your specific project needs. We offer testing, inspection and consulting services related to building materials, structures and operation of buildings. Through our experience in conducting forensic services, we have deep knowledge in the areas of material performance, service life, constructability and causes for building and material failures.

MATERIALS LABORATORY



Braun Intertec has several material laboratories in office locations throughout the Central U.S. as well as mobile labs that we can place directly on site to support our clients' projects. Our laboratories are AMRL-accredited with several validated by the United States Army Corp of Engineers (USACE), and our laboratory located in Minneapolis, Minnesota is ISO 17025 accredited. We have the capabilities to tackle small projects, large multi-year projects, and research projects for national companies and governmental agencies.



CONSTRUCTION MATERIALS TESTING

With our long history and extensive staff expertise, Braun Intertec has provided construction materials testing services to a broad range of developers, contractors, consultants, municipalities, agencies and corporations. You'll find our expertise on many monumental structures, including the Mall of America, Target Field, Cedar Rapids Library, Waste Water Treatment Plant in the City of Galveston, TX, the Hess Gas Plant in Tioga, ND, and the METRO Green Line in Minneapolis, MN. At Braun Intertec, we work closely with your team early in the process to anticipate and minimize potential problems that could result in costly project delays, and we'll help you work toward targeted solutions.

GEOTHERMAL CONSULTING

Braun Intertec provides geothermal consulting services addressing due diligence, engineering, quality assurance, and repair and remediation for geothermal HVAC systems. We work with owners, engineers, architects and contractors to test and observe new installations for quality geothermal system construction. We also assist in identifying existing system issues in a timely and cost-effective manner.



GEOSPATIAL

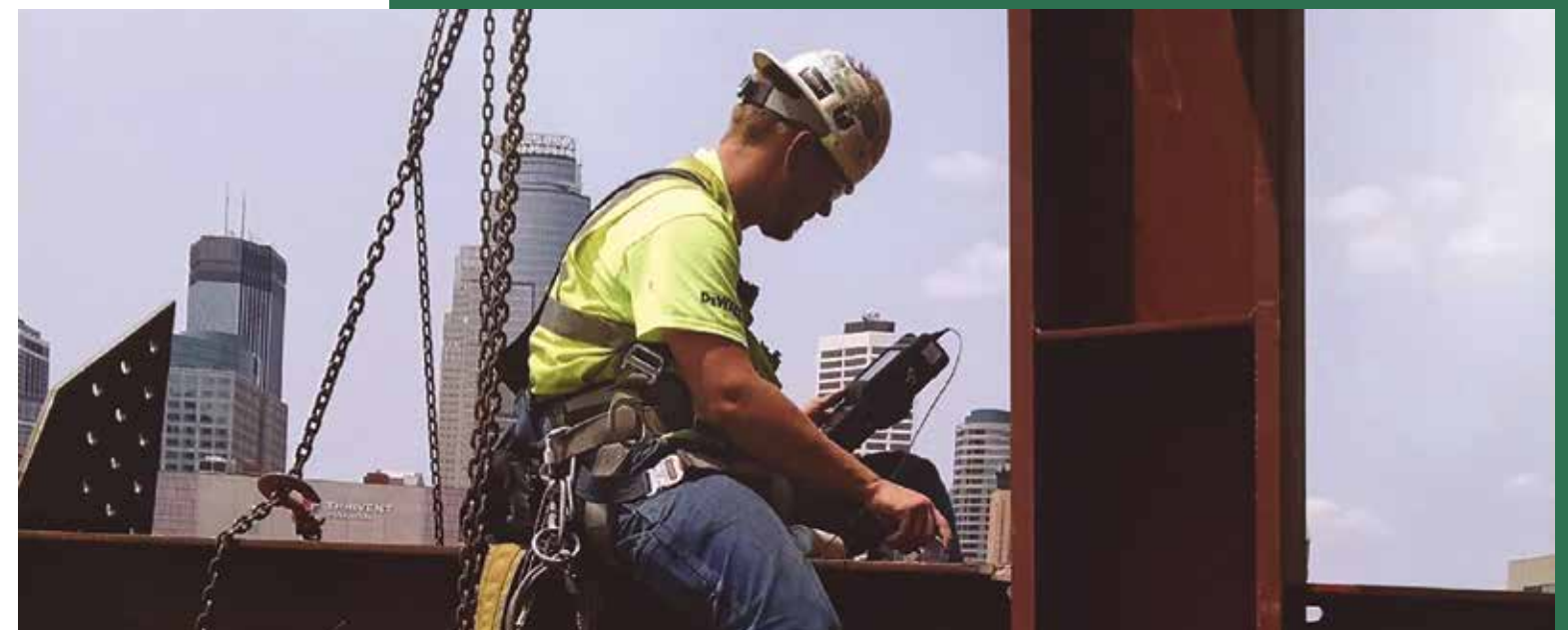
Our geospatial operations team provides geospatial services and technologies at Braun Intertec. We focus on providing clients Computer Aided Drafting (CAD), Geographic Information Systems (GIS) and Global Positioning Systems (GPS) services utilizing specialized software, hardware and trained specialists. Our specialists deliver creative and dynamic solutions, leveraging our vast array of data resources (both spatial and non-spatial) into intelligent, searchable, centralized and distributable applications for our clients. We select technologies that best capture, integrate and deliver accurate geospatial data.

NONDESTRUCTIVE EXAMINATION

Our Nondestructive Examination (NDE) group has earned a reputation for providing high-quality services on a wide range of projects. For more than 35 years, we have been serving clients in the petrochemical, mining, power generation, pipeline, aerospace, automotive, manufacturing, fabrication and construction industries. Our ability to work across many industries has allowed us to maintain the largest NDE staff in the upper Midwest while expanding our NDE services throughout the Central U.S. Our NDE group works diligently to help you meet project specifications by providing services performed by qualified technicians.

“Braun Intertec provides seasoned experts who work hard to earn the respect of others in the design studio and on the job site. I have found that they recommend the right level of inspections and services to complete the project.”

Dan Mehls, Vice President, Mortenson Construction



MARKET SECTORS

COMMERCIAL

Whether you are building a large distribution center on the outskirts of town or a high-rise office building in the heart of downtown, Braun Intertec understands the challenges associated with commercial construction. From providing geotechnical to environmental to testing solutions, our ability to not just identify issues but to offer solutions has made us a trusted partner on commercial construction projects.



RETAIL

Whether performing pre-construction surveys prior to construction of a new mall, conducting pavement analysis on parking lots for big-box retailers or evaluating roofing systems for potential leaks, Braun Intertec works with some of the world's largest retailers. We'll bring our first-class reputation and expertise to your retail construction needs including: geotechnical engineering, environmental consulting and construction materials testing. Additionally, we can provide integrated pavement design and management plans for your parking lot and ramp construction.

UTILITIES

Braun Intertec has consulted on a myriad of energy-related projects including transmission lines, natural gas plants, coal plants and renewable energy facilities such as wind, solar and hydro power. With our extensive experience in the energy sector, we'll work closely with your team to provide solid geotechnical engineering, environmental consulting and material testing services. Our team is well-versed in current and proposed government regulatory policies, including the Clean Power Plan (CPP) and the Combustible Coal Residue (CCR) regulations. We can help you evaluate the impact of these regulations on your existing facilities and effectively develop cost-efficient compliance strategies to meet these regulations.





WATER INFRASTRUCTURE

At Braun Intertec, our geotechnical engineers and flood protection specialists can work with you to perform compliance determinations on existing flood control or water containment structures or assist with the design of new structures. We are ready to support you in creating a pre-flood plan, deploying and working by your side during a flood event and reassessing your site in a post-flood after-action study.

From a construction perspective, our engineers and technicians can provide on-site observation and material testing. We are also able to provide value engineering services and can assist you with the design and implementation of temporary excavation retention systems.

RESIDENTIAL

Braun Intertec has extensive experience working with developers of single-family, multi-family, and senior housing. From performing environmental due diligence during site selection, to geotechnical site evaluations and materials testing during construction, to forensic investigations in existing housing units, we'll work with you throughout each phase of your residential project. Delivering added value to each of your projects is a top priority for Braun Intertec.

MINING

We have worked on mining projects across the upper Midwest and western states to become a trusted industry partner in helping our clients get their products to market. We offer a breadth of services that include: geotechnical engineering, drilling, construction materials testing, environmental consulting, building sciences and structures evaluation.

OIL & GAS

Braun Intertec partners with clients across the United States to build and maintain the infrastructure needed for obtaining, collecting and processing oil and gas-related products. Whether we are performing a geotechnical evaluation on a new well pad, construction materials testing on a rail load-out facility, weld inspections on miles of pipeline or API services on an existing refinery, our dedicated staff rise to meet the needs and challenges of the oil and gas industry.

“We pride ourselves on service and experience when it comes to oil and gas projects, with safety as our number one priority.”

Ken Haag, Vice President of Oil & Gas

OUR SERVICES FOR THE OIL & GAS MARKET:

- Support for the growing Liquid Natural Gas (LNG) industry
- Spill prevention control, spill response, environmental support and regulatory compliance services
- Geotechnical evaluations and construction material testing services for well pads, pipelines, railways and a variety of oil and gas facilities
- Radiography, ultrasonic, magnetic particle, liquid penetrant testing, phased array and API inspections for pipelines and fixed facilities





INDUSTRIAL & AGRICULTURE

We provide services to help agribusiness and industrial companies assess and maintain a variety of facilities, such as chemical manufacturing plants, grain elevators and food production facilities. Our team of concrete and structural steel experts and construction testing technicians deliver value to property owners, architects, engineering firms and general contractors by working to improve agribusiness facilities or building industrial plants.

INSTITUTIONAL

Schools, libraries, museums and stadiums are important parts of our communities – these institutions are where we learn, where we read, and where we cheer on our favorite teams. Braun Intertec works with facility managers, architects, general contractors and property owners to provide innovative solutions for new and existing structures. We provide a range of services to institutional clients, including environmental site assessments, geotechnical engineering, building envelope testing, and special inspections.



TRANSPORTATION

Whether you are constructing a new stretch of railroad tracks, resurfacing a heavily used county road, just starting out on a design-build bridge project or planning a new highway alignment, Braun Intertec can help you with your project from start to finish. Throughout the central U.S., our services on transportation projects range from geotechnical evaluations, materials testing and pavement analysis engineering, to environmental assessments and right-of-way due diligence.

With a wide range of services, we cover a variety of transportation projects, including:

- Heavy rail
- Design-Build
- Transit
- State Department of Transportation
- Local, County and State Aid Highway
- Aviation
- Ports



“Our experience extends beyond roads and bridges. You’ll also see our consultation work on numerous air, rail and port projects.”

Jeff Gebhard, Vice President

HEALTHCARE

Healthcare facilities are evolving. As communities grow and clinics and hospitals require more space, there is a need for additional buildings, expansions and new parking structures to accommodate the demands of healthcare delivery and patient care. Braun Intertec understands the changing infrastructure needs of your healthcare facilities. We provide drilling, environmental and geotechnical engineering, materials testing for new state-of-the-art facilities, and building evaluations and industrial hygiene services for existing structures.

Our employee-owner culture is a driver of our success.

100% EMPLOYEE-OWNED

At Braun Intertec, our employees own the company through an Employee Stock Ownership Plan (ESOP). Our employee-owner culture is a driver of our success. We have a financial stake in the company and have an interest in delivering quality services to our clients. The ESOP model is supported by developing programs that compensate, communicate to and inspire others to “think and act like owners.” We work to build a community of employee-owners through project collaboration, team-building events and charitable event participation.

SAFETY

Braun Intertec places its top priority on protecting the health and safety of its employee-owners. We lead continuous improvement initiatives related to our safety processes, procedures and culture. Braun Intertec invests in safety by providing extensive employee safety training and development, enforcing safe operating procedures, using quality safety equipment and engaging our employee-owners in actively focusing on safety first, every day.

QUALITY

Quality is key to client satisfaction at Braun Intertec. Our goal is to deliver the highest quality to our clients on every project. We strive to continuously improve our processes and deliver quality services to our clients by utilizing an active quality team that includes employee-owners from around the company. We value employee input and support involvement in our continual improvement efforts. From our quality management system to routine quality audits, quality is an important priority at Braun Intertec.

BRAUN INTERTEC FOUNDATION

Giving back to our communities is important to our employee-owners. We are proud to support **STEM Education** through programs such as *J.S. Braun/ Braun Intertec Professorship of Science and Technology at the University of Minnesota, Math Counts, and Gateway to Science Museum*; **Environmental Advocacy** by supporting *Great River Greening, Adopt-A-Highway, and The Trust for Public Land*; and **Local Human Services** such as *Aeon affordable housing, Brain Tumor 5k Run/Walk, and an Annual Food Drive*. We believe these charitable giving priorities are a vital part of giving back to our professions as well as our communities.

HISTORY

In 1957, Jack Braun founded the company that is now known as Braun Intertec out of his home in a Minneapolis suburb. His entrepreneurial spirit and dedicated leadership helped the company to grow and expand its service offerings to numerous clients in the public and private sector. Today, Braun Intertec is a leading engineering, environmental, design and testing firm. As we continue to build relationships in emerging markets and recruit new talent, we never lose sight of our humble beginnings and the many strong and supportive relationships we've formed along the journey. We aspire to be the consultant of choice. Each employee-owner is dedicated to making this a reality every day through our client and business partnerships.



WE'RE READY TO HELP YOU.

Here's how to contact us.

Iowa

319.365.0961

Tim Wiles
twiles@braunintertec.com

Kansas

913.962.0909

Mark Loes
mloes@braunintertec.com

Louisiana

337.412.6129

Robert DuPont
rdupont@apexgeo.com

Minnesota

800.279.6100

Bret Borth
bborth@braunintertec.com

North Dakota

855.302.4559

Katherine Kelley
kkelley@braunintertec.com

North Texas

800.755.8461

Duane Harrell
dharrell@apexgeo.com

South Texas

210.478.6710

Ken Haag
khaag@braunintertec.com

Oklahoma

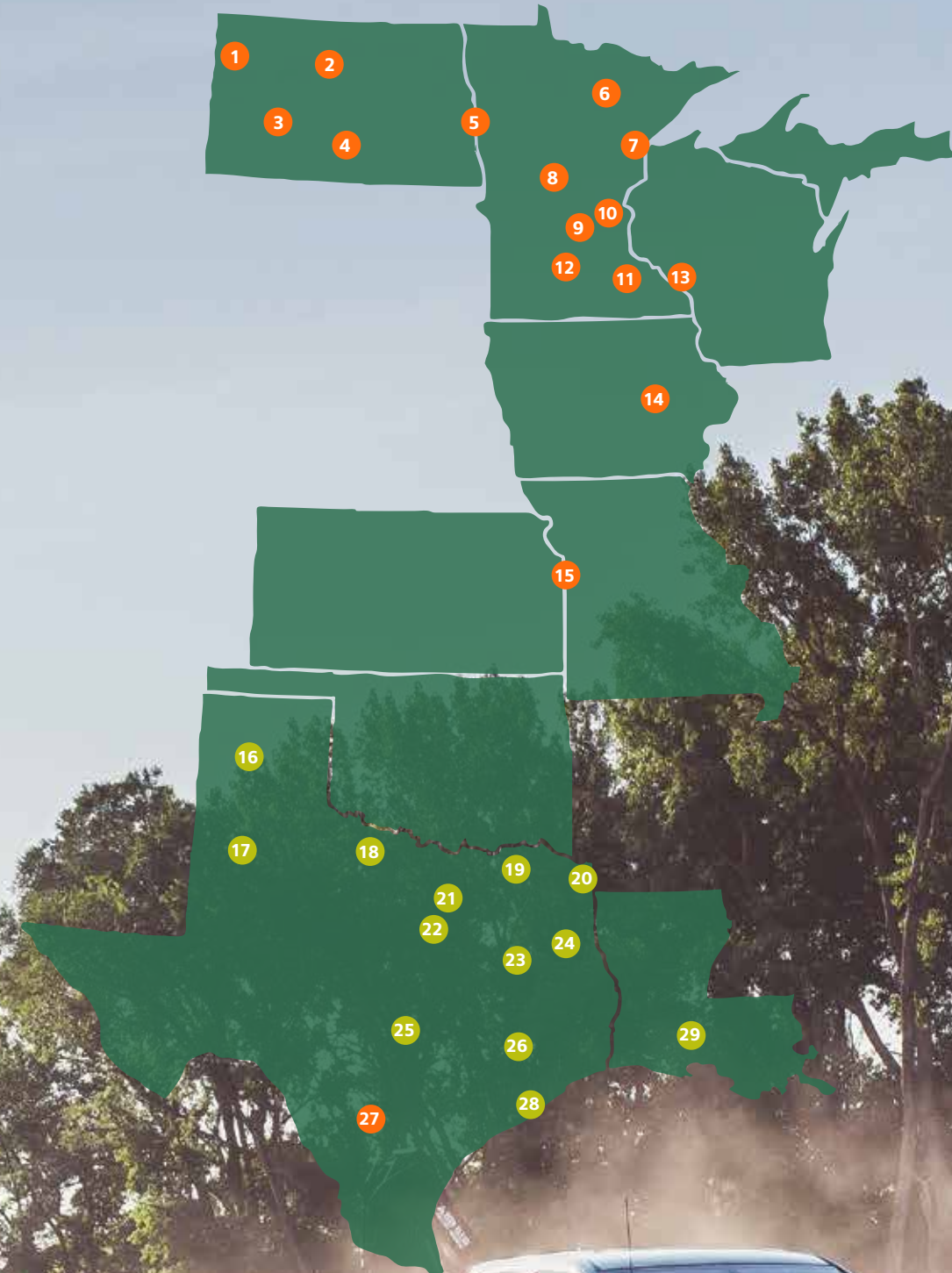
405.732.3333

Hershel Lance
hlance@apexgeo.com

Wisconsin

800.856.2098

Mark Gretebeck
mgretebeck@braunintertec.com



OFFICE LOCATIONS

- Braun Intertec Offices
- Apex Geoscience Offices
A division of Braun Intertec

North Dakota

- 1 Williston
- 2 Minot
- 3 Dickinson
- 4 Bismarck
- 5 West Fargo

Minnesota

- 6 Hibbing
- 7 Duluth
- 8 Saint Cloud
- 9 Minneapolis
- 10 Saint Paul
- 11 Rochester
- 12 Mankato

Wisconsin

- 13 La Crosse

Iowa

- 14 Cedar Rapids

Kansas/Missouri

- 15 Kansas City

Texas

- 16 Amarillo
- 17 Lubbock
- 18 Wichita Falls
- 19 Paris
- 20 Texarkana
- 21 Richardson
- 22 Arlington
- 23 Tyler
- 24 Longview
- 25 Austin
- 26 Conroe
- 27 San Antonio
- 28 Texas City

Louisiana

- 29 Lafayette

WE'RE GROWING IN THE SOUTH.

Apex Geoscience, an experienced geotechnical engineering, testing and environmental consulting company has joined the Braun Intertec team. This acquisition increases our ability to support clients throughout the central United States—from Williston, North Dakota to Lafayette, Louisiana and from Hibbing, Minnesota to San Antonio, Texas.

For more than 20 years, the Apex team has served clients in Texas, Oklahoma, Arkansas, New Mexico and Louisiana. Now those same local experts add to the depth of services offered by Braun Intertec with knowledge and experience in environmental consulting, geotechnical engineering, building sciences and construction materials testing and inspection. This combination of talent is an exceptional gain for Braun Intertec as we join two firms with great reputations and regional strengths.

By expanding geographically, we can make full use of the deep talent currently on our team. No matter what markets we enter, we continue to strive to be the consultant of choice for our clients and employer of choice for our employee-owners.

For more information about Apex Geoscience, visit www.apexgeo.com or contact Ryan Venable, Principal, at rvenable@apexgeo.com or **800.755.8461**.



“Our firms are well-aligned—we both place a high value on maintaining strong client relationships and emphasize the importance of providing meaningful work for our employees.”

Mitchell Bernhard, Principal



BRAUN
INTERTEC

The Science You Build On.

855.995.4669

braunintertec.com

info@braunintertec.com