

GROW MINNESOTA! PARTNERSHIP

Dedicated to Minnesota's Economic Growth

GROW MINNESOTA! PARTNERSHIP
MINNESOTA CHAMBER OF COMMERCE
Direct Services

DEVELOPING WORKFORCE SOLUTIONS

REAL TIME TALENT (RTT)

St Paul • <http://www.realtimetalent.org/>

TOOLS AND INNOVATION TO ADDRESS LABOR FORCE NEEDS

As a new program of the Minnesota Chamber Foundation, RealTime Talent brings together education, workforce, economic development and private industry leaders to address our state's talent shortage.

Rooted in the work of Minnesota's Itasca project and commissioned to bring new data and process innovation, the organization has introduced a real-time labor market information tool that helps to create more informed and efficient market-oriented decisions throughout Minnesota's workforce and educational ecosystem.

RealTime Talent provides extensive research, reports and data-use consulting services on sector analysis, career pathway development and labor trends. It is leading the charge to bring sector business leaders together to create solutions for the labor shortage. This tool is being used by industrial organizations, the University of Minnesota, the Minnesota State system, multiple private colleges, and Department of Employment and Economic Development workforce centers.

RealTime Talent has also introduced a new job-to-candidate platform to assist employers in finding the right fit in a qualified candidate. The exchange has been branded for the Minnesota Chamber as Minnesota Job Match. www.mnchamber.com/grow/mn-job-match



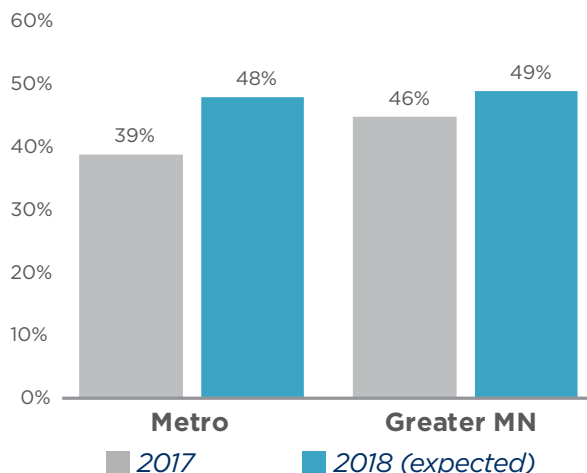
RealTime Talent

Using data to build the world's best workforce

GROW MINNESOTA FINDINGS

2018 Jobs Outlook

Percentage of businesses adding jobs

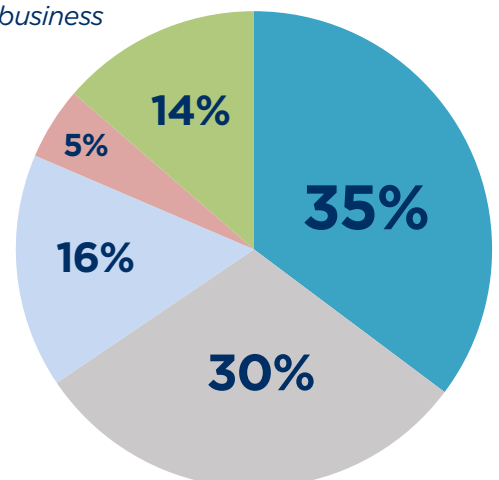


Source: Grow MN! Program

Most entry level jobs require 2-yr or less

Education required for entry-level positions at your business

- Technical/Community College
- High School/GED
- 4 Year College
- Professional Degree
- Other



BUSINESS EDUCATION NETWORK

REACH

Winona

<http://www.winonachamber.com/page/2458>

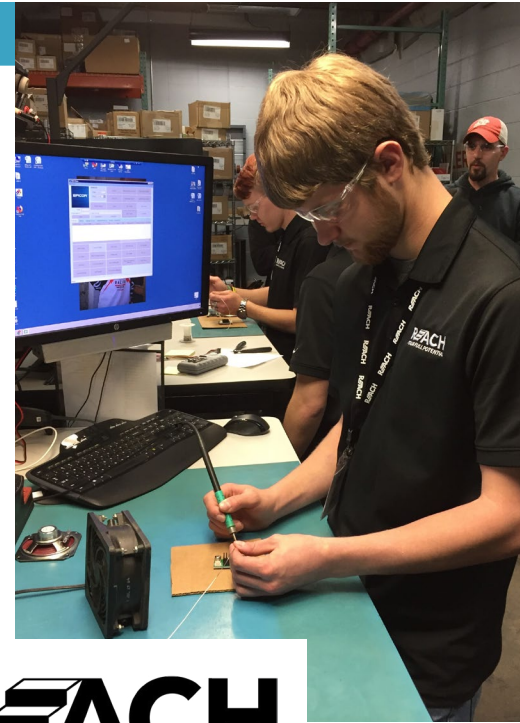
WINONA BUSINESS EDUCATION NETWORK – REACH

REACH, a program of the Winona Area Chamber of Commerce Business Education Network, showed off new CNC equipment installed at the high school. Donated by Fastenal in partnership with Stone Machinery and Walter Tools, the \$40,000 equipment donation will provide REACH students with improved hands-on learning.

Twenty-six Winona High School juniors are participating in the two-year immersion experience that focuses on work preparedness, improved academic performance and internships. Students learn leadership, communication and professional soft skills through classes and out-of-school activities. In addition, students are taking a series of specific technical classes.

The students will graduate from high school and also earn credits through Minnesota State College Southeast. "The REACH program shines brightest under the collaborative light generated by industry, high school technical education, our technical college and nonprofit community members," said Travis Thul, dean of trade and technology. "Fastenal continues to demonstrate that, together, we can truly build something special."

REACH is part of the Minnesota Chamber Business Education Networks, a program intended to better connect employers with high school and college students, and with higher education and workforce training systems. The goal is to ensure that businesses have ready access to highly skilled workers, and to make certain that students from all backgrounds complete programs in areas where they will have meaningful employment opportunities.



REACH
YOUR FULL POTENTIAL



GROW MINNESOTA! PARTNER: WINONA AREA CHAMBER OF COMMERCE

<http://www.winonachamber.com/>

The Winona Area Chamber is an innovator, taking action to meet the workforce needs of area businesses. Through its partnership with the Minnesota Chamber, the chamber has completed close to 500 Grow Minnesota! business retention visits since 2003. Of those companies visited, the local chamber has assisted in more than 60.

SCIENCE FROM SCIENTISTS

Bloomington (Housed in Braun Intertec building)

<http://www.sciencefromscientists.org/staff-2#minnesota>

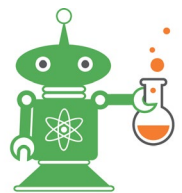
Email: minnesota@sciencefromscientists.org

INSPIRING THE NEXT GENERATION TO PURSUE CAREERS IN STEM TRADES AND PROFESSIONS

Recall a pivotal or life-changing moment from youth. Chances are you were immersed in an activity, experienced strong emotions or sudden insight, and were influenced by a role model. Science from Scientists' (SfS) during-school STEM enrichment program for grades 3-8 creates these opportunities for "aha-moments" with role models for all students – regardless of circumstances or means – to encourage a wider variety and greater number of students to pursue careers in STEM fields.

SfS sends the same two STEM professionals into the same classrooms – 18 times a year to lead the students through a variety of hands-on, inquiry-based STEM lessons. The lessons are aligned with national and state academic standards. Classroom teachers select the lessons to complement their existing curricula. The program measures its success at improving student aptitude and attitude in STEM in several ways including tracking post-program improvements in student scores on state science assessments.

Get involved with SfS to grow your local workforce in a meaningful way. Help expose students to real scientists working in your communities and transform their lives.



SCIENCE
FROM SCIENTISTS



BRAUN INTERTEC GIVES BACK TO STEM EDUCATION

Minneapolis

<https://braunintertec.com/>

BRAUN INTERTEC

The Science You Build On.

Grow Minnesota! recognizes another valuable Minnesota business. Braun Intertec is headquartered in Minneapolis, but its presence is felt statewide with offices in Hibbing, St Paul, Duluth, Mankato, St Cloud and Rochester. In addition to supplying valuable jobs, the company is doing its part to develop a future workforce.

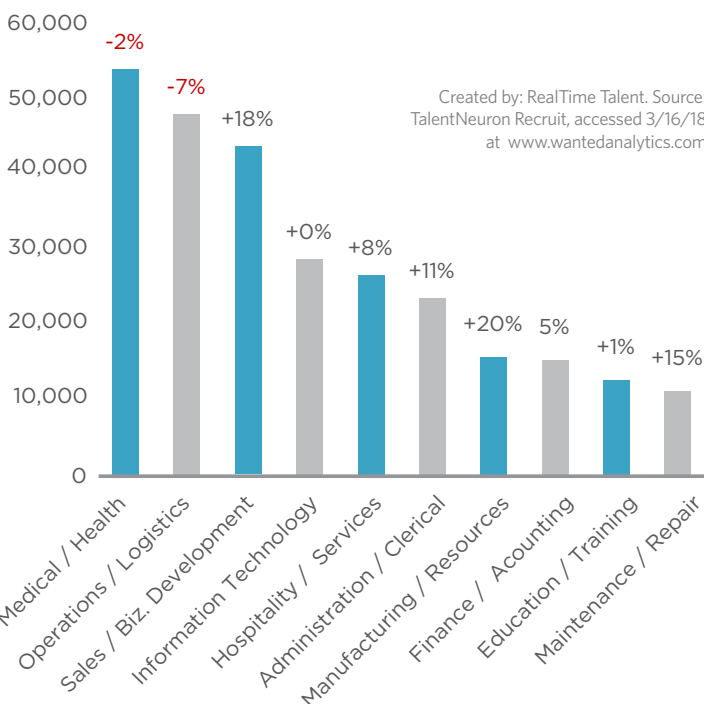


The Braun Intertec Foundation was formed as a way to give back to the local communities in which they serve. Through the foundation, Braun Intertec has had the rare opportunity to donate office space and resources to Science from Scientists (SfS) for a Minneapolis location since 2016. Based in Massachusetts, SfS is a nonprofit organization that works to improve the attitudes and aptitudes of students in grades 4-8 by building hands-on lessons for students, and then sending real scientists into the schools to inspire students and improve STEM competency.

Beyond partnering with SfS, Braun Intertec relies on proactive search methods to fill its open positions. The company has both entry-level and technical roles that are great opportunities for those just entering the workforce. Braun Intertec works with local high schools and veteran's organizations to inform them of available opportunities. In addition, organizations are invited to speak with Braun Intertec's engineers and technicians who work in the field to foster excitement in a career within the industry.

Jobs Advertised Online in Minnesota by Top 10 Sectors/Functions January-February 2018

(Percent Change from Prior Year)



NEW HORIZONS MINNESOTA - LEADER IN IT TRAINING

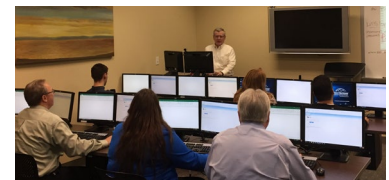
Eagan - PH: 651-287-9950

www.newhorizonsmn.com



Grow Minnesota! contacted New Horizons Minnesota to learn more about this

woman-owned business and its services. They are the leading provider of IT, desktop applications, project management and business skills training courses. As a training provider for many of the industry's top vendors, such as Microsoft, VMware and Cisco, they are positioned to offer the latest authorized classes delivered by certified instructors to keep you on the cutting edge of information technology.



New Horizons is ranked in the top 5 percent in the industry for training quality and customer satisfaction as reported by an independent third-party learning and quality assurance company, Knowledge Advisors. Because they are local, they understand the needs of business and individuals in their community. As a result of their training, research shows yields of 4:1 benefit-to-cost ratio, based on manager surveys of the improved performance and productivity of their employees immediately following New Horizons training.

Grow MN! Partnership

A robust statewide partnership of local chambers of commerce and economic development entities

Albert Lea-Freeborn County Chamber
Albert Lea Economic Development Authority*
Alexandria Lakes Area Chamber
Alexandria Area Economic Development Commission*
APEX
Apple Valley Chamber
Austin Area Chamber
Bemidji Area Chamber
Big Lake Chamber
Bloomington Chamber
Blooming Prairie Chamber
Brainerd Lakes Chamber
Brainerd Lakes Area Economic Development Corp.*
Burnsville Chamber
Cuyuna Lakes Chamber of Commerce
Dakota County Regional Chamber
Duluth Area Chamber
East Grand Forks EDA*

Eden Prairie Chamber
Elk River Area Chamber
Fairmont Area Chamber
Faribault Area Chamber
Fergus Falls Area Chamber
Grand Forks/East Grand Forks Chamber
Grand Rapids Area Chamber
Itasca Economic Development Corp.*
Greater Mankato Growth Inc.
Hastings Area Chamber
Hibbing Area Chamber
I94 West Chamber
International Falls Area Chamber
Lake City Chamber
Lake City EDA*
Lakeville Area Chamber
Laurentian Chamber
Litchfield Chamber
Long Prairie Area Chamber

Marshall Area Chamber
MetroNorth Chamber
New Ulm Area Chamber
North 65 Chamber
Northfield Area Chamber
Owatonna Area Chamber
Park Rapids Area Chamber
Pipestone Area Chamber
Princeton Area Chamber
Princeton Economic Development*
Progress Plus *
Red Wing Chamber
Richfield Chamber
River Heights Chamber
Rochester Area Chamber
Rochester Area Economic Development Inc.*
Roseville EDA*
Saint Cloud Area Chamber
Saint Paul Area Chamber

Shakopee Area Chamber
SouthWest Metro
Stillwater Area Chamber
Thief River Falls Area Chamber
TwinWest Chamber
Vadnais Heights Economic Development Corp.*
Waconia Chamber
Waseca Area Chamber
White Bear Area Chamber
White Bear Lake Economic Development Corp.*
Willmar Lakes Area Chamber
Winona Area Chamber
Worthington Area Chamber
Statewide Affiliate Partners:
University of Minnesota Extension
TriState Manufacturers Association (TSMA)

* Denotes economic development co-partners

GROW MINNESOTA!

We know Minnesota's economy

Grow Minnesota! is helping to grow our state's economy. Our passion to retain and grow Minnesota businesses aligns with the overall mission of the Minnesota Chamber of Commerce. The program is entering its 15th year and operates in partnership with more than 70 local and regional chambers of commerce and economic development organizations.

Every Grow Minnesota! business retention visit has four purposes: First, we thank the business owner or manager for having a business in our state and employing Minnesotans; second, we learn as much as we can about the business and its Minnesota activities; third, we ask if we can assist the company to stay and grow in our state; and, fourth, we ask what policymakers can do to improve our state's overall business environment.

GROW MINNESOTA! STAFF

Vicki Stute 651.292.3908
Kathi Schaff 651.292.4667
Sean O'Neil 651.292.4674

**Coulee Bank, an
Approved SBA Lender,
is proud to support the
Minnesota Chamber
of Commerce.**

Coulee Bank
BANK WITH CONFIDENCE

742 Grand Avenue
St. Paul, MN
(651) 698-8100
www.couleebank.net